

**Aldreds**  
Estate Agents



29 Gunton Church Lane

Lowestoft, NR32 4LG

Asking Price £395,000



4



2



2



## 29 Gunton Church Lane

Lowestoft, NR32 4LG

Aldreds are delighted to present this spacious four-bedroom detached home, ideally located within one of the most sought-after postcodes in North Lowestoft. The property is perfectly positioned within walking distance of Gunton Woods and Nature Reserve, as well as a scenic bridle path leading directly to Corton Beach. This impressive family home offers excellent outdoor space, featuring a generous frontage with ample off-road parking, a double tandem garage, and beautifully maintained rear lawned gardens enjoying a high degree of privacy. The versatile and well-proportioned accommodation comprises a wide entrance porch opening into a welcoming entrance hall, a spacious front-to-back lounge, a formal dining room, a well-sized kitchen, a ground floor bedroom, and a convenient ground floor W.C. To the first floor, a central landing provides access to three double bedrooms and a family bathroom. While the property would benefit from some updating, it presents an exciting opportunity to modernise and potentially extend (subject to planning permissions), making it an ideal long-term family home. Offered at a realistic asking price for this highly desirable Gunton St Peters location, early viewing is strongly advised. The property is available with no onward chain.

### Wide Entrance Porch

Fitted carpet, coved ceiling, Upvc entrance door large under stair storage cupboard, radiator.

### Wide Entrance Hall

Fitted carpet, radiator, power points, coved ceiling, galleried staircase leading off to first floor, 2 x full length storage cupboards.

### Lounge

11'5" x 20'9" (3.49 x 6.33)

Fitted carpet, coved ceiling, double aspect Upvc windows including Upvc sliding patio doors leading out to the rear garden, T.V point, power points, 2 x radiators.

### Formal Dining Room

11'5" x 9'8" (3.5 x 2.96)

Fitted carpet, coved ceiling, Upvc window, radiator, power points, wide opening double doors leading back through to the lounge.

### Kitchen

13'3" x 10'11" (4.06 x 3.35)

Tiled flooring, range of fitted kitchen units, extended work surfaces, tiled splash backs, stainless steel sink with single drainer, recess for white goods including plumbing for washing machine, full length airing cupboard, full length pantry cupboard which houses the energy efficient gas boiler, Upvc window overlooking the rear garden, Upvc door leading out to the side driveway.





#### Bedroom 4

8'3" x 11'2" (2.53 x 3.42)

Fitted carpet, coved ceiling, Upvc window, radiator, power points.

#### Cloakroom

Fitted bathroom flooring, cloakroom suite comprising of a low level W.C., wall mounted sink, tiled splash backs, Upvc window.

#### First Floor

Full size central landing, fitted carpet, radiator, loft access leading to insulated loft space, double fitted cupboard, power points.

#### Bedroom 1

11'9" x 12'3" (3.6 x 3.75)

Fitted carpet, Upvc window, radiator, power points.

#### Bedroom 2

11'6" x 9'9" (3.53 x 2.98)

Fitted carpet, coved ceiling, radiator, power points, Upvc window.

#### Bedroom 3

8'11" x 10'9" (2.73 x 3.28)

Fitted carpet, coved ceiling, radiator, power points, Upvc window.

#### Family Bathroom

Fitted bathroom flooring, bathroom suite comprising of a shower set over a panel bath, pedestal sink, low level W.C., part tiled walls, Upvc window, radiator with towel rail.

#### Outside To the Front

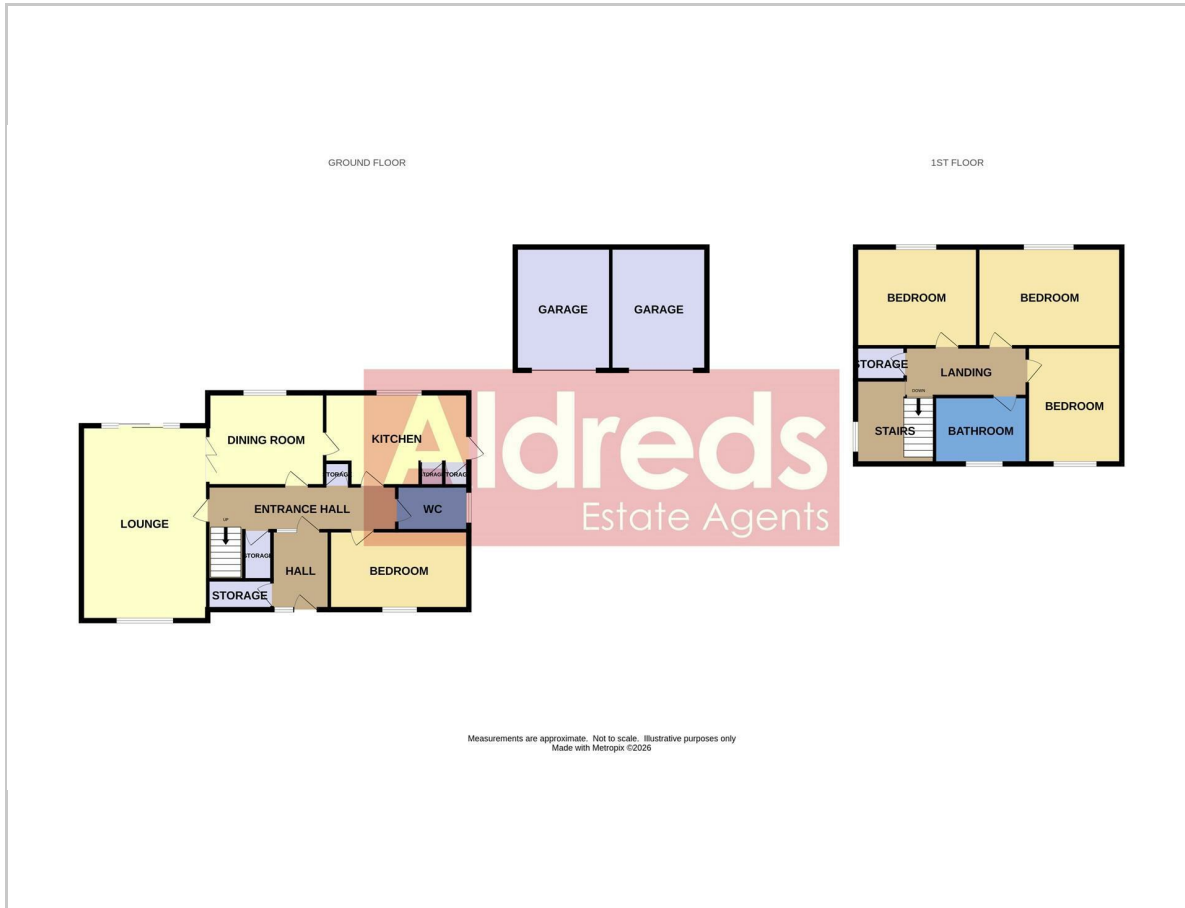
There is a substantial frontage which is laid to lawn, mature shrubs and trees, long driveway providing ample off road parking for a variety of cars or motor vehicles that leads down to double tandem garage with up and over doors, power points and lighting.

#### Outside To The Rear

There is a beautifully presented rear garden which has a very private rear and side aspect, laid to lawn with a full range of specimen mature flowers and shrubs, small wildlife pond with water lilies, timber and felt garden shed, greenhouse, patio seating area ideal for bistro style dining, side access leading back to the front driveway which is all enclosed by high shrubs and fencing.



## Floor Plan



## Area Map



## Viewing

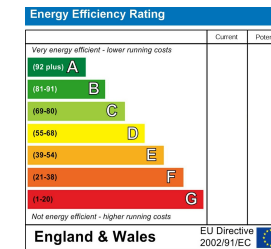
Please contact our Aldreds Lowestoft Office on 01502 565432 if you wish to arrange a viewing appointment for this property or require further information.

### Disclaimer

These particulars are issued on an understanding that all negotiations shall be conducted through Messrs. Aldreds. Please note: Messrs. Aldreds for themselves and for the vendors or lessors of this property whose agents they are given notice that: 1. Particulars are set out as a general outline only for guidance of intending purchasers or lessees, and do not constitute nor constitute part of, an offer or contract. 2. All descriptions, dimensions, references to condition and necessary permissions for use and occupation, and other details are given without responsibility and any intending purchasers or tenants should not rely on them as statements or representations of fact but must satisfy themselves by inspection or otherwise as to the correctness of each of them. 3. No person in the employment of Messrs. Aldreds has any authority to make or give any representation or warranty whatever in relation to this property. 4. If you are proposing to visit the property and are travelling some distance please check with Aldreds on the issue of availability prior to travelling. 5. Aldreds Property Consultants and associated services may offer additional services to the prospective purchaser for which they will be entitled to receive a commission.

Aldreds are pleased to be working with Mortgage Advice Bureau. They're an award-winning mortgage broker with over 1,400 advisers across the UK, and have access to over 12,000 mortgage products from over 90 lenders. Aldreds Estate Agents Ltd receive a commission of £200 on each completed case. Your home may be repossessed if you do not keep up repayments on your mortgage. There may be a fee for mortgage advice. The actual amount you pay will depend upon your circumstances. The fee is up to 1%, but a typical fee is 0.3% of the amount borrowed. Mortgage Advice Bureau is a trading name of Mortgage Seeker Limited which is an appointed representative of Mortgage Advice Bureau Limited and Mortgage Advice Bureau (Derby) Limited which are authorised and regulated by the Financial Conduct Authority. Mortgage Seeker Limited Registered Office: Lovewell Blake, Sixty Six North Quay, Great Yarmouth, Norfolk, NR30 1HE. Registered in England Number: 03721415. 6. Potential purchasers should check with their providers that the broadband and mobile phone coverage they would require is available.

## Energy Efficiency Graph



143 London Road North, Lowestoft, Suffolk, NR32 1NE

Tel: 01502 565432 Email: [lowestoft@aldreds.co.uk](mailto:lowestoft@aldreds.co.uk) <https://www.aldreds.co.uk/>

Registered in England Reg. No. 08945751 Registered Office: 17 Hall Quay, Great Yarmouth, Norfolk NR30 1HJ

Directors: Mark Duffield B.S.c. FRICS. Dan Crawley MNAEA Paul Lambert MNAEA